

Most things you should know about security for you and your home or your business.

The main reason a fair percentage of people buy security systems is because they were burgled recently.

They suffered from the **“it’ll never happen to me”** syndrome.

Also it’s surprising how many people contact us and mention that not only were they robbed, but it happened **while they were in bed asleep.**

Many believe home and content insurance is sufficient.

Insurance companies can’t replace the life of a loved one.

The main reason people don’t have a security system is because in most cases, it’s the exorbitant cost. We receive many phone calls from people who have been quoted anywhere from \$1500-\$3000. This is simply too much. Over 90% of quality security systems cost around the same to manufacture. Although it’s fair to say distributors, sales people and installers do add a bit.

How burglars operate.

In the vast majority of cases, entry is gained at the rear of the property or out of sight of the street or neighbours.

Access into a tiled roof via a retaining wall or similar is simple because the tiles just slide open. It’s also common that where a hardwired system is installed, (control panel is almost always in a top cupboard) all wiring leads down through one hole which thieves simply cut to disable sirens and phone line. Incidentally, most installed wireless systems still have a control panel in a top cupboard with sirens and phone line leading to it.

Generally a jemmy can open almost anything. This is a flat bar bent at right angles near the end which is sharpened. Sliding windows and doors (and so-called security doors) are a cinch.

Laundry doors don’t put up to much resistance to a good kick.

Burglaries at night are becoming more common because, with a well planned exit they can just take off when they hear you or see a light come on. (Would you really investigate in the dark?)

Some burglars aren’t normal human beings and will confront you.

How do we know all this? **The burgled** have told us!

How monitoring companies work.

Monitoring companies charge around \$300-\$600 per annum. This is usually put to you as “only a \$1.50 a day” which doesn’t sound much but on a 3 year contract is actually \$1642.50. **Plus** the security system

When your alarm is activated by only one sensor they just phone you.

That’s it. If they can’t contact you they do nothing.

Two sensors must activate before they call the police.

A guard response is extra, \$100-\$150 per visit. Still payable for a false alarm.

Security installers receive a large commission cheque from the monitoring company for each contract.

How security sensors work.

Quality PIR (passive infrared) sensors look for a combination of movement and infrared signals from a large living object. Movement alone won't trigger them. A person gives off heat which is picked up by the sensor as an infrared signal. Pet immune sensors are designed so the small objects under about 60cm and 18gks don't give off a big enough infrared signal to trigger the sensor. They only operate in the same area as the sensor, **not through a wall or window.**

Sensors generally have at least an operating arc of at least 100 degrees so when placed in a 90 degree corner, pick up everything. They can see out about 12 metres. This way, one sensor can cover a 12 X 12 metre area.

How to locate/install PIR sensors.

The main priorities are rear and front entry areas and rooms with valuables, garages, hallways, sheds etc. Better to use window sensors in bedrooms, these can be armed at night.

To locate PIR sensors, simply stand in corners and check the best coverage. Our PIR sensors come with Velcro sticky tabs. The rear corners of the sensors are cambered, so can be stuck in a corner. This way you don't have to drill holes in walls, great for property renters also.

Door/window sensors.

These work by moving a magnet stuck to the window or door away from a switch wired to the sender unit or just the sender (in the case of the LS-30). The sender unit and or switch sticks to the door or window frame and magnet sticks to window or door.

Where these come into their own is because these can be armed separately from PIRs.

Particularly at night. This is called HOME MODE. (You can also have some PIRs armed as well in this mode)

Glass break sensors

Glass break sensors are installed simply by sticking the sender unit on the frame or wall nearby and sticking the sensor onto the glass. When glass is broken, alarm is activated.

We are often asked, "which are best, glass break or door/window sensors?" Probably 19 times out of 20 thieves will jimmy open doors and windows rather than smash them.

If they can't because of locks, then they smash them.

Base unit location

We've been asked many times for advice on this.

Some are concerned thieves will damage it if it's too visible.

There are several thousand of our systems installed and no reported damaged base units.

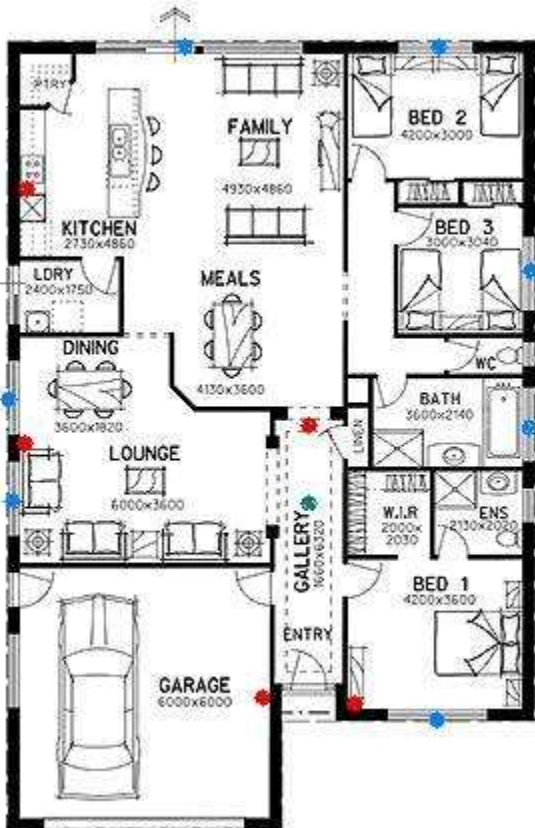
One of the great features of our systems is that when the alarm activates and calls you, you can actually listen in and speak to or warn who ever is within 5-10 metres of the base unit.

Locate it where it's convenient to you and where you have a phone and power point. (You don't need a spare phone outlet) Doesn't have to be mounted but can just sit on a flat surface.

If you locate it in a cupboard, room corner, near a cordless phone or next to a computer monitor, you may have communication problems with sensors and accessories. Both systems monitor all sensors throughout the day and will warn you of any communication problems. (Or low batteries)

House plans & advice on sensor installation

Below are suggestions for a single level home and a two storey home



Red spots. PIR Sensors
Blue spots. Door/window sensor
Green. Smoke detector

When deciding on sensor locations, it's all a question of priority and of course, budget.

In the example on the left, First three PIRs would be located in:

1. Kitchen/family/meals.
2. Entry/gallery
3. Lounge

(In an older style 3 bedroom home with hallway then the third sensor would be located in the lounge covering entry)

Next PIRs would be in room with valuables such as main bedroom study or garage or outside sheds with tools etc.

If using door/window sensors, priority locations are rear and side where intruders are generally out of sight of neighbours. You can arm these while home.

One of the advantages of door/window sensors is the alarm and dialer is activated before intruders are actually inside.

In a two storey home, the first three PIRs would be located in:

- 1. Entry
- 2. Family/kitchen/meals
- 3. Upstairs

Location priorities of other sensors are similar to a single storey home.

